

# 关于博宇

## ABOUT BOYU

无锡市博宇塑机有限公司成立于1998年,专业生产塑料挤出机,是挤出机领域的先驱者,公司集设计、生产、销售和售后服务于一体。我们一直致力于最新技术的研发和制造,累计技术专利60余项。

公司推出大型高端配置的熔喷布设备,旨在生产性能稳定的高过滤率熔喷布产品。

Wuxi Boyu Plastic Machinery Co., Ltd. was established in 1998, specialized in plastic extruder, and it is the pioneer in extruder field. Boyu company integrates design, manufacture, sales and after-sales service. We have been committed to the development and manufacture of the latest technology, accumulating more than 60 technical patents.

Boyu company has launched large and high configuration equipment for meltblown nonwoven fabric, the aim is to manufacture quality stable and high filter fabric product.

<b>智能系统</b> INTELLIGENT SYSTEM	<b>智能制造</b> INTELLIGENT MANUFACTURE
ERP系统、物料管理、能源管理、物料自动计量、远程控制 Erp system, material management, energy management, material automatic dosing, remote control	同步控制系统 Synchronous control system

<b>智能感知</b> HIGH CONFIGURATION	<b>高端配置</b> HIGH CONFIGURATION
速度、电流、温度、熔体压力、物料重量、风速、流量 Speed, current, temperature, melting pressure, material weight, air speed, flow	西门子PLC S7-1500、维纳尔母线导轨、机柜空调、施耐德电器 Siemens plc s7-1500, wohner bus guide, cabinet a/c, schneider electrical

<b>安全系统</b> SAFETY SYSTEM	<b>绿色制造</b> GREEN MANUFACTURE
安全回路 Safety loop	二级能效节能电机、新型加热系统、真空泵水循环系统、VOC处理系统 Secondary energy efficiency motor, new type heating system, vacuum pump water circulating system, voc treating system

www.boyuextruder.com

# 设备选型表

## PRODUCT CONFIGURATION

产品规格 Specification	熔喷模具 Die	螺杆规格 Screw	速度M/min Speed	克重 Gsm range	产量吨/24小时 Capacity T/24h	装机功率/KW Installed power	运行功率/KW Running power	过滤率 Filter rate
<b>BOYU-1600</b>	M	Φ90	40-80	8~80 g/sq.m	1.5	550	380	90-95%
	MM	Φ90×2	40-80	8~80 g/sq.m	3	950	665	95-99%
<b>BOYU-2400</b>	M	Φ120	40-80	8~80 g/sq.m	2.2	780	500	90-95%
	MM	Φ120×2	40-80	8~80 g/sq.m	4.5	1500	1000	95-99%
<b>BOYU-3200</b>	M	Φ150	40-80	8~80 g/sq.m	3	1000	700	90-95%
	MM	Φ150×2	40-80	8~80 g/sq.m	6	2000	1400	95-99%

\*BOYU医用熔喷布生产线技术规格



# 熔喷非织造布生产线

## MELTBLOWN NONWOVEN FABRIC PRODUCTION LINE

### Boyu 博宇

无锡市博宇塑机有限公司  
Wuxi Boyu Plastic Machinery Co., Ltd.  
无锡市新吴区江溪街道坊前锡甘路186-6号  
No.186-6, Xigan Road, Fangqian, Xinwu District, Wuxi, China

陆钉毅 +86 130 0331 1128  
lu@byjh.cn

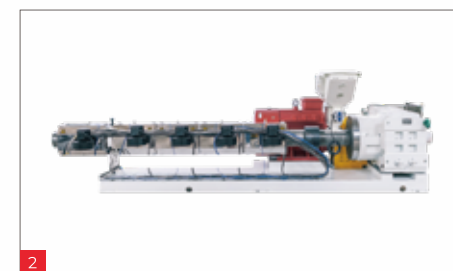
陆家浩 +86 137 7155 9988  
louis@byjh.cn

[www.boyuextruder.com](http://www.boyuextruder.com)

无锡市博宇塑机有限公司  
Wuxi Boyu Plastic Machinery Co., Ltd.

# 熔喷非织造布双喷生产线

DOUBLE MELTBLOWN NONWOVEN FABRIC PRODUCTION LINE

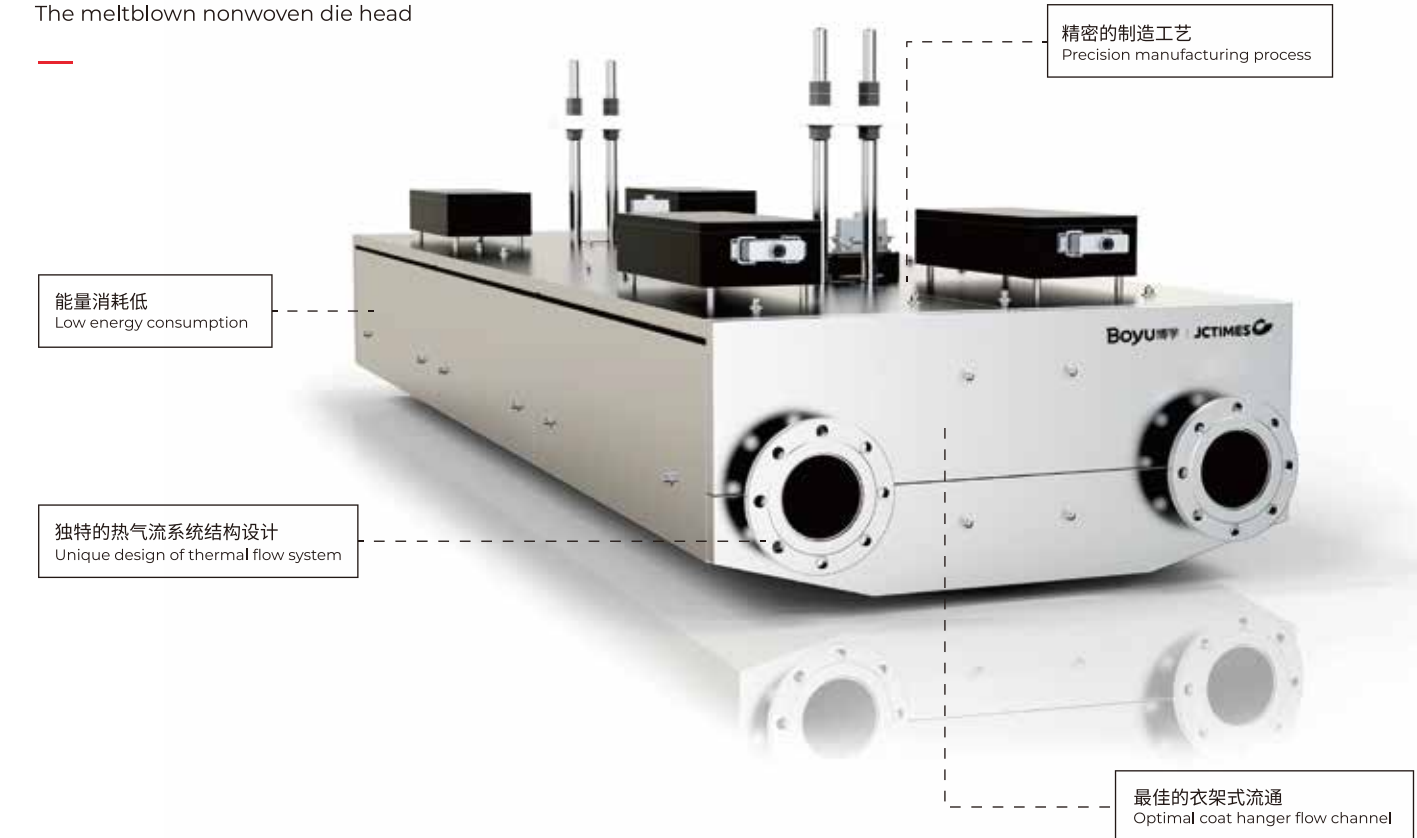


- 1 上料系统  
Material Feeding System
- 2 挤出机  
Extruder
- 3 成网机  
Mesh forming machine
- 4 驻极处理  
Electret treating machine
- 5 分切收卷机  
Cutting and winding machine
- 6 集中电气控制柜  
Centralized electrical control cabinet

# 熔喷系统

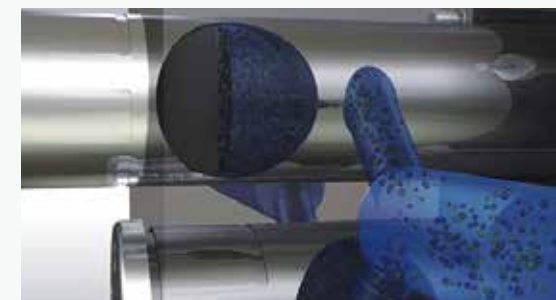
MELTBLOWING SYSTEM

熔喷非织造布设备模头  
The meltblown nonwoven die head



双柱双工位过滤器  
Double pillar double working station screen changer

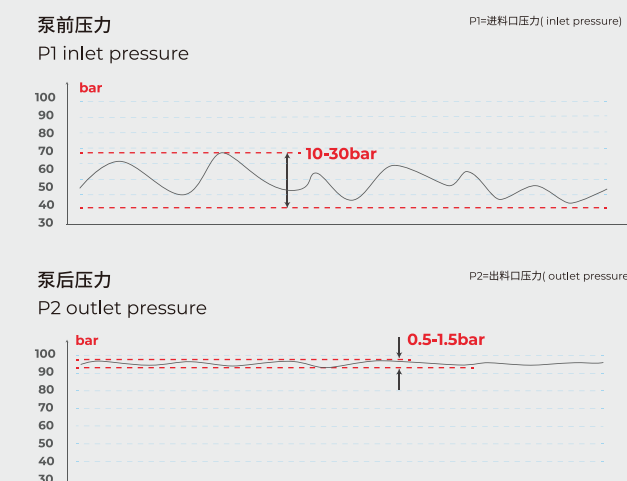
具有较大的过滤面积, 不停机更换过滤网  
With larger filtering area, non stop filter screen changing



塑胶熔体齿轮泵  
Plastic melt gear pump

稳定且高效的压力控制  
Stable and efficient pressure control

泵前与泵后压力曲线图  
Curve of inlet pressure and outlet pressure



静态混合器  
Static mixer

高效熔体混合提高塑化一致性  
Achieve better melt homogeneity by way of high efficient mixing

